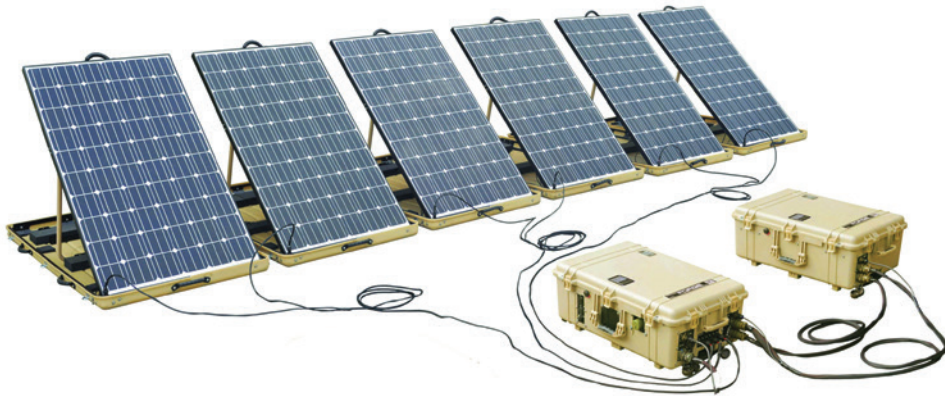


FORGE LT™

Rugged, Portable Hybrid Power for AC Loads



The ZeroBase™ Forward Operating Renewable Generator (FORGE™) system has been developed for harsh and hazardous environments, available in standard configurations designed to deliver clean, continuous power from 300 Watts to 4000 Watts.

These systems utilize scalable Lithium Iron Phosphate (LiFePO4) battery modules charged with Generator, Grid, or Solar input power converted by optimized electronics into high quality, silent output power.

Key Features

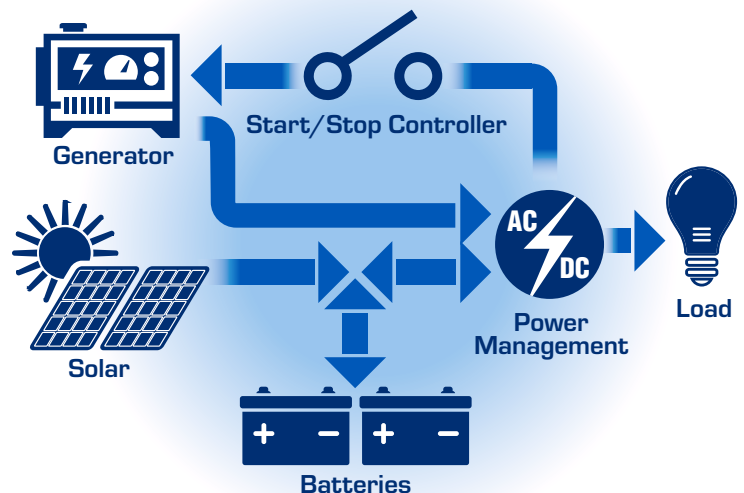
- Three standard output power options: 300 W, 2000 W, 4000 W
- 120 V or 230 V output
- Designed to meet applicable MIL-STD 810G tests
- Man portable
- Safe, reliable, long life LiFePO4 batteries: 1.3 kWh and 3.4 kWh module options
- Compatible with all 24 V solar options
- Scalable solar panels up to 4.5 kW
- Impact resistant solar panels IEC 61215 certified
- Generator remote auto-start kit available
- System and battery monitoring options

Key Benefits

- Silent power source
- Mission-ready
- Quick set-up
- Maintenance free
- Field portable
- Ruggedized packaging
- Proven reliability
- Proven field performance

Applications

- First responders
- Medical emergencies
- Silent watch
- Disaster relief
- Forward operating bases
- Remote sensors & relays
- GPS systems
- C4ISR equipment
- Force protection systems
- Expeditionary communications



ZEROBASE™
ENERGY TO THE EDGE

FORGE LT™

Rugged, Portable Hybrid Power for AC Loads

Power Module	LT 300	LT 2K	LT 4K
AC Service (at 60 Hz)	110 ± 3% Vac	120 ± 2% Vac	120 ± 2% Vac
Solar Input (per battery module)	420 - 1120 W max	1120 W max	1120 W max
AC Nominal Output	300 W Pure Sine Wave	2000 W Pure Sine Wave	4000 W Pure Sine Wave
AC Peak Output	700 W	4000 W	6000 W
DC Output	USB	USB / 24 V / 12 V	USB / 24V
Battery Ports (#)	150 A (1)	150 A (2)	150 A (4)
Enclosure I Rating	IP54	IP54	IP65
Weight Power Module	25 lbs / 11.34 kg	82 lbs / 37 kg	94 lbs / 42.64 kg
Dimensions LWH (in)	18.25 x 13.0 x 7.5	22.0 x 17.9 x 10.4	17.0 x 25.0 x 16.75
Dimensions LWH (cm)	46.36 x 33.0 x 19.05	55.9 x 45.4 x 44.8	43.18 x 63.5 x 42.55
Operating Temp	-20° to 50° C	-4° to 122° F	
Storage Temp	-46° to 71° C	-50.8° to 159.8° F	

Battery Module Parameters	1.3 kWh	3.4 kWh
DC Voltage	25.6 V	25.6 V
AMP Hours	51 Ah	134 Ah
Wh Capacity	1310 Wh	3440 Wh
Max Output	150 A	150 A
Max Charge	50 A	70 A
Weight	41 lbs / 18.6 kg	95 lbs / 43.1 kg
Dimension LWH (in)	18.25 x 13.0 x 7.5	21 x 12.5 x 16.5
Dimension LWH (cm)	46.36 x 33.0 x 19.05	54.6 x 31.8 x 41.9

Solar Module Parameters

Max Power (Pmax)	560 W	Power Density	177.6 W/m ²
Rated Voltage (Vpm)	66.26 V	Rated Current (Imp)	8.48 Amps
Open Circuit Voltage (Voc)	79.2 V	Short Circuit Current (Isc)	9.43 Amps
Weight	95 lbs / 43.1 kg	Efficiency (Cell / Module)	20% / 17.8%
Dimensions LWH (in)	68.5 x 42 x 8.25	Dimensions LWH (cm)	982 x 1653 x 38
Operating Temp (F)	-4° to 140° F	Operating Temp (C)	-20° to 60° C



ZeroBase Energy™, llc / www.ZeroBaseEnergy.com / Info@ZeroBaseEnergy.com / +1 888 530 9376

ZeroBase™ reserves the right to change or update, without notice, any technical information contained in this bulletin. DS-FRG